



AB07G - ADAPTABLE BOX - PLAIN

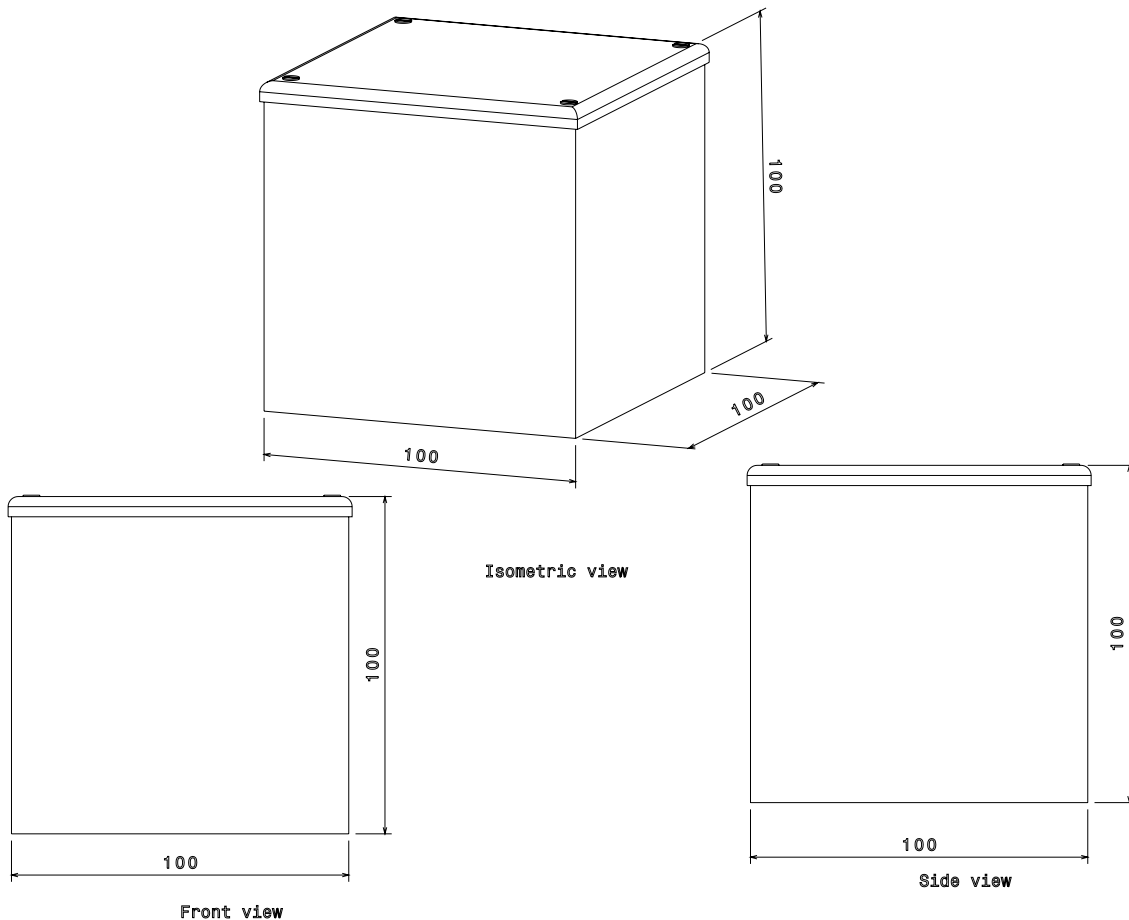
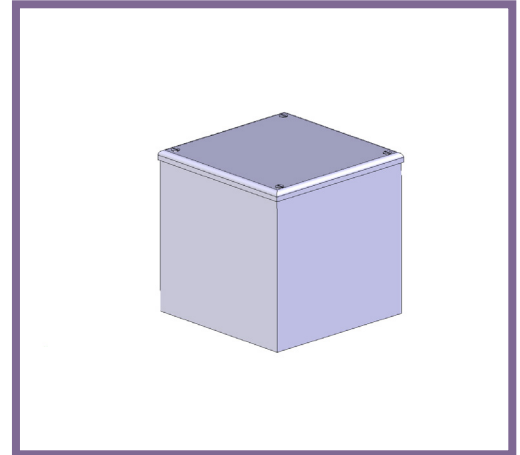
Description AB07G - 100 x 100 x 100mm (4 x 4 x 4") Adaptable Box - Plain

Finish Pre Galvanised Sheet Steel

Material Galvanised Steel Sheet

Packaging Packed in qty 2 (Can be purchased individually)

Additional Notes Comprises of Body, Flanged Cover and M5 x 10mm Lid Fixing Screws
Plain sides (This product is also available with pre-cut Knockouts)
Compliant To LU Standard 1-085 (For Use On Surface & Sub-Surface Locations)



All measurements in mm unless otherwise stated