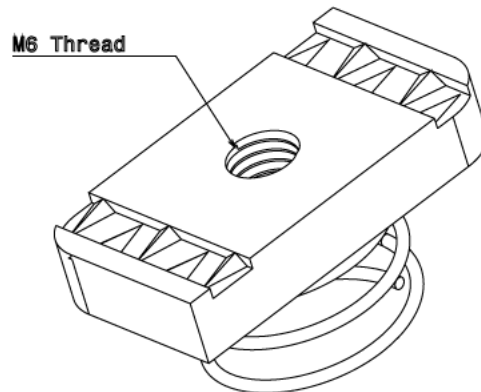
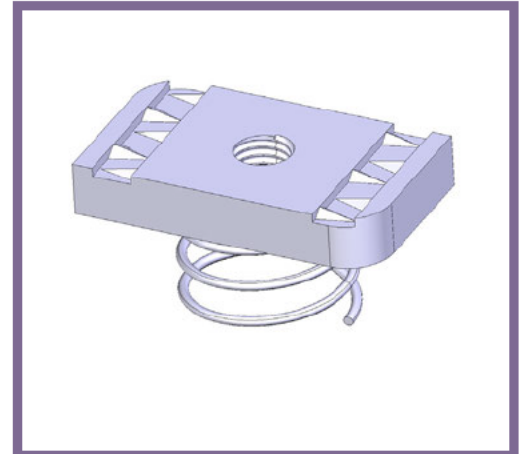


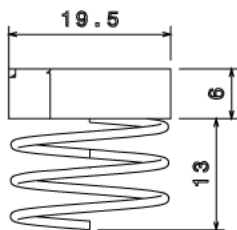


CS24/SS - CHANNEL SPRING NUT

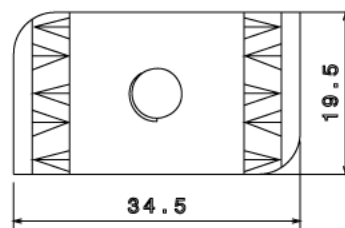
Description	CS24/SS - M6 Short Spring Nut
Finish	Self Colour
Material	Stainless Steel Grade 316
Packaging	Packed in qty 100
Additional Notes	For use with 21mm Depth Channel Produced to comply with the requirements of BS6946 Metal Channel Support Systems Compliant To LU Standard 1-085 (For Use On Surface & Sub-Surface Locations)



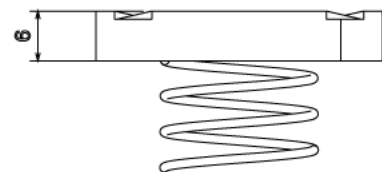
Isometric view



Front view



Top view



Side view

All measurements in mm unless otherwise stated