



FA1 - CONDUIT ADAPTOR

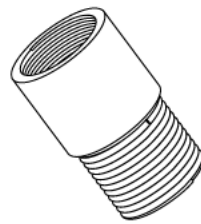
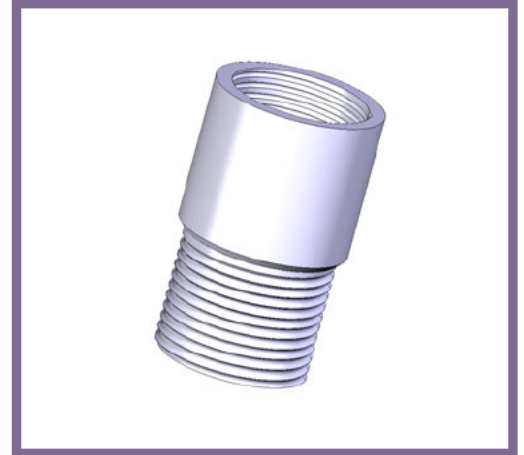
Description FA1G / B - 20mm(Male) - 3/4"(Female) Conduit Adaptor

Finish BZP (G) or Black (B)

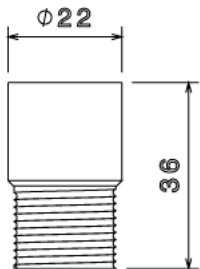
Material Steel

Packaging Packed in qty 100

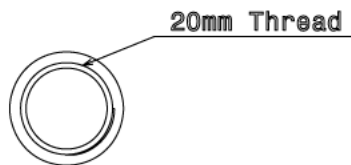
Additional Notes Compliant to LU Standard 1-085
(For use on surface & sub-surface locations)



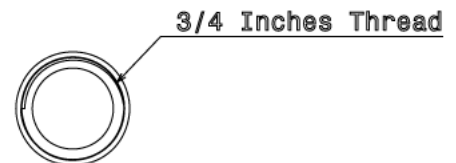
Isometric view



side view



Top view



Bottom view

All measurements in mm unless otherwise stated