



FA4 - CONDUIT ADAPTOR

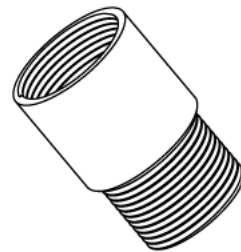
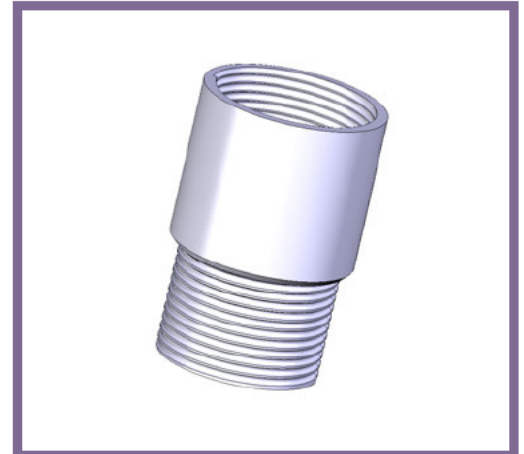
Description FA4G / B - 1"(Male) - 25mm (Female) Conduit Adaptor

Finish BZP (G) or Black (B)

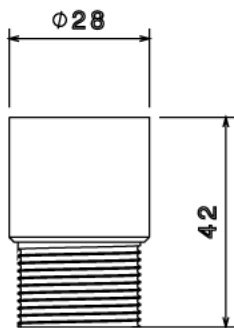
Material Steel

Packaging Packed in qty 50

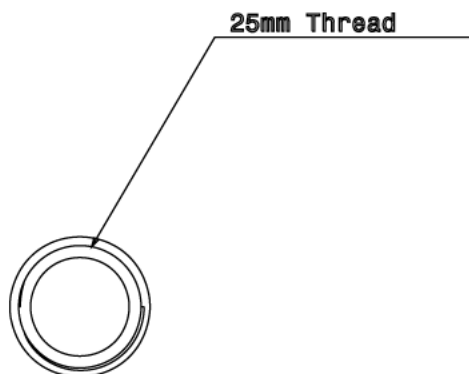
Additional Notes Compliant to LU Standard 1-085
(For use on surface & sub-surface locations)



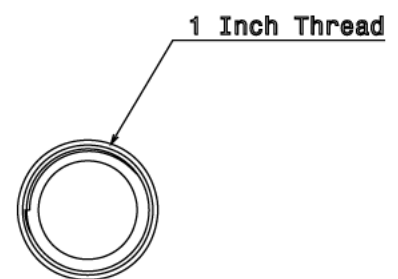
Isometric view



Side view



Top view



Bottom view

All measurements in mm unless otherwise stated