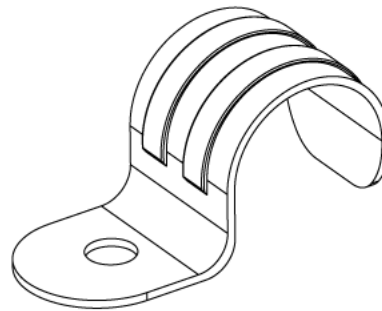
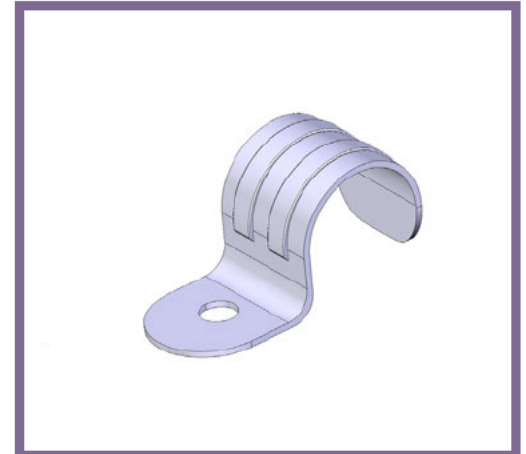


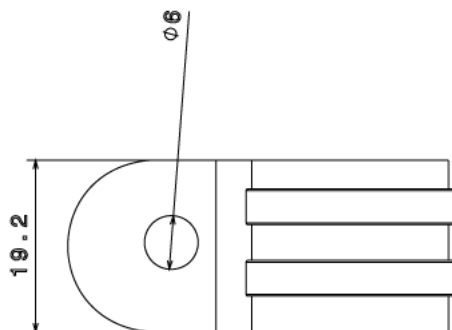


## HS1 - HALF SADDLE

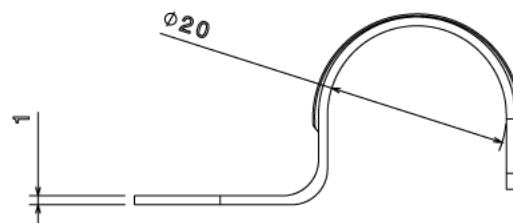
<b>Description</b>	HS1G / B - 20mm Half Saddle
<b>Finish</b>	BZP (G) or Black Enamel (B)
<b>Material</b>	Pressed Steel
<b>Packaging</b>	Packed in qty 100
<b>Additional Notes</b>	Compliant to LU Standard 1-085 (For use on surface & sub-surface locations)



**Isometric view**



**Top view**



**Side view**

All measurements in mm unless otherwise stated